

Product Declaration Certificate

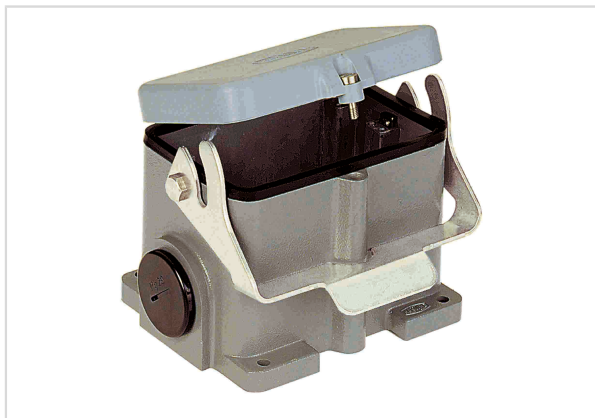


Image is for illustration purposes only. Please refer to product description.

Part number	09 30 048 2295
Specification	Han B Base Surface LC 1 Lever Metal Cove
HARTING eCatalogue	https://b2b.harting.com/09300482295

RoHS	compliant with exemption
RoHS exemptions	6(b) / 6(b)-II: Lead as an alloying element in aluminium containing up to 0,4 % lead by weight / Lead as an alloying element in aluminium for machining purposes with a lead content up to 0,4 % by weight
ELV status	compliant with exemption
China RoHS	50
REACH Annex XVII substances	Not contained
REACH ANNEX XIV substances	Not contained
REACH SVHC substances	Yes
REACH SVHC substances	6,6'-di-tert-butyl-2,2'-methylenedi-p-cresol Lead
California Proposition 65 substances	Yes
California Proposition 65 substances	Lead Nickel Naphthalene

RoHS: Directive 2011/65/EU with all amending directives and regulations in force at the declaration's creation date.

ELV status: Directive 2000/53/EC with all amending directives and regulations in force at the declaration's creation date.

REACH ANNEX: Regulation (EU) No. 1907/2006 with all amending directives and regulations in force at the declaration's creation date.

REACH SVHC substances: We applied "Candidate List of substances of very high concern for Authorisation" of ECHA valid on the declaration's creation date.

ECHA SCIP: Article notification number in the SCIP Data base of the European Chemicals Agency (ECHA) according to Waste Frame Directive 2008/89/EC with amended directive 2018/851 in Article 9